

Pannon Community Hub

Veszprém, Egyetem Street

University of Pannonia, Building 'E'

Pannon Community Hub is located at 10 Egyetem Street, which is Building 'E'. The building is easily accessible by car and public transport, as it has a disabled parking. From the train station, lines 4 and 4A run to Komakút Square bus stop, which is only 130 metres from the university building. From the bus station you can reach line 4 and 4A, and you can also get on the buses 1, 2, 3, 10 and 13, all of which stop at the Veszprém Petőfi Theatre. From this stop, the building is about 400 metres away. All local buses in Veszprém are low-floor buses, so anyone can easily use them.

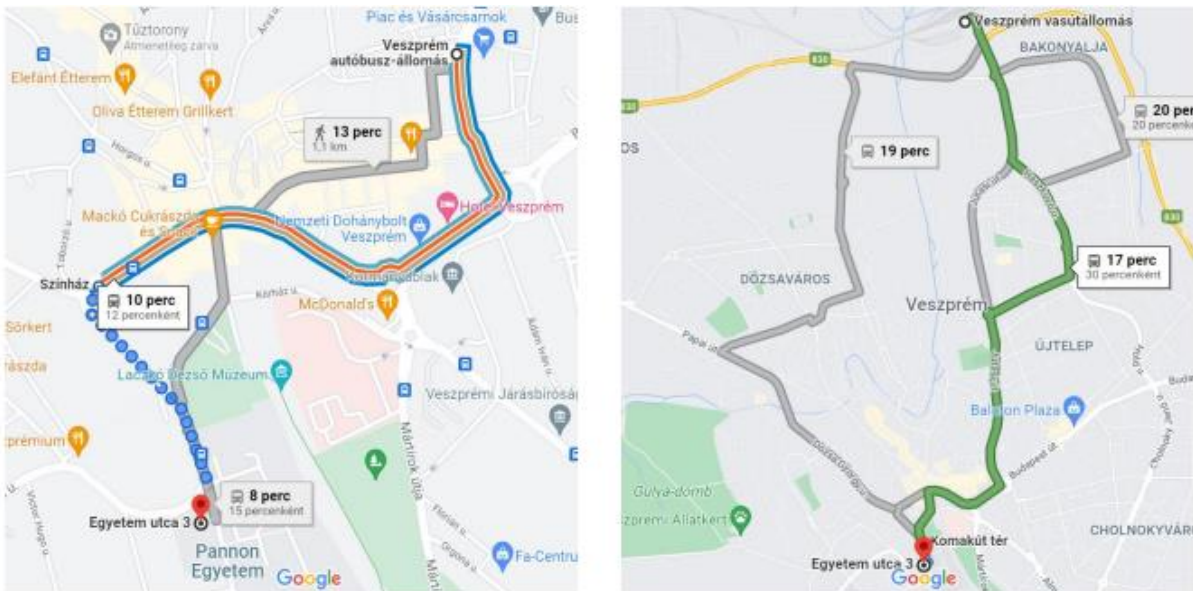


Figure 1 Access by public transport



Figure 2 Entrance to building 'E'

To the left of the main entrance of the building you can find a gate. This gate is open from 6 am to 10 pm from 10 am to 10 pm. In case it is closed, you should ring the bell or go to the reception of building B (opposite) or call the Pannon Community Hub, who can open the gate.



Figure 3 Accessible entrance

Once through the gate, a long sloping ramp leads up to the terrace, which is furnished with garden furniture.



Figure 4 Garden

From the terrace you can enter the building, the Community Space. It can be arranged to your needs, with the only fixed furniture next to the wall, so that every piece of furniture is easy to move.

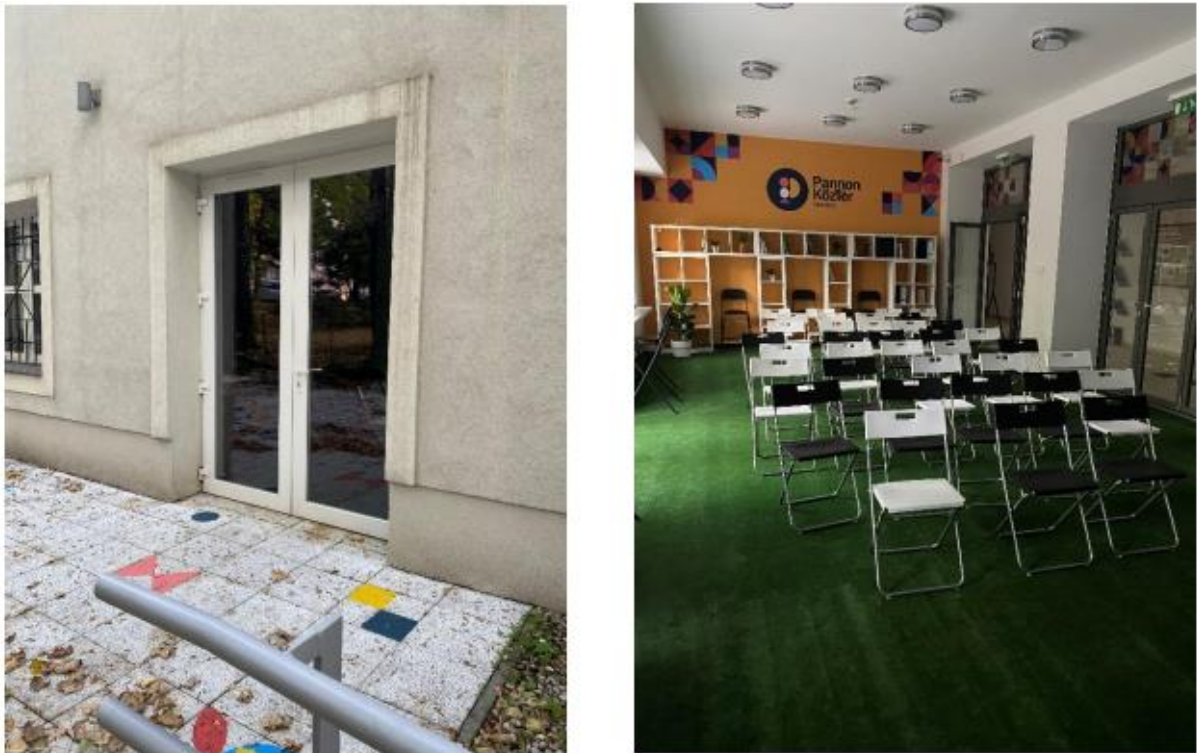


Figure 5 Entrance and interior of the Community Hub

The room has three doors to the ground floor of the building, all of them are accessible, but the rear door is the widest and the most easily accessible.



Figure 6: The back door of the Pannon Community Hub

From the main entrance, coloured stripes run towards the 4 main rooms of the building, the Community Space (Köztér), the Project Room (Nagyter), the Volunteer Room (Kister) and the office (Iroda). These markings run right up to the door, where the names of the rooms are also written.



Figure 7 Markings, foreground

The building has accessible toilets. They are located to the left of the main entrance. Important to note though, that the 1st floor of Building 'E' can not be accessed by elevator. The 1st floor is not accessible.



Figure 8 Accessible toilets